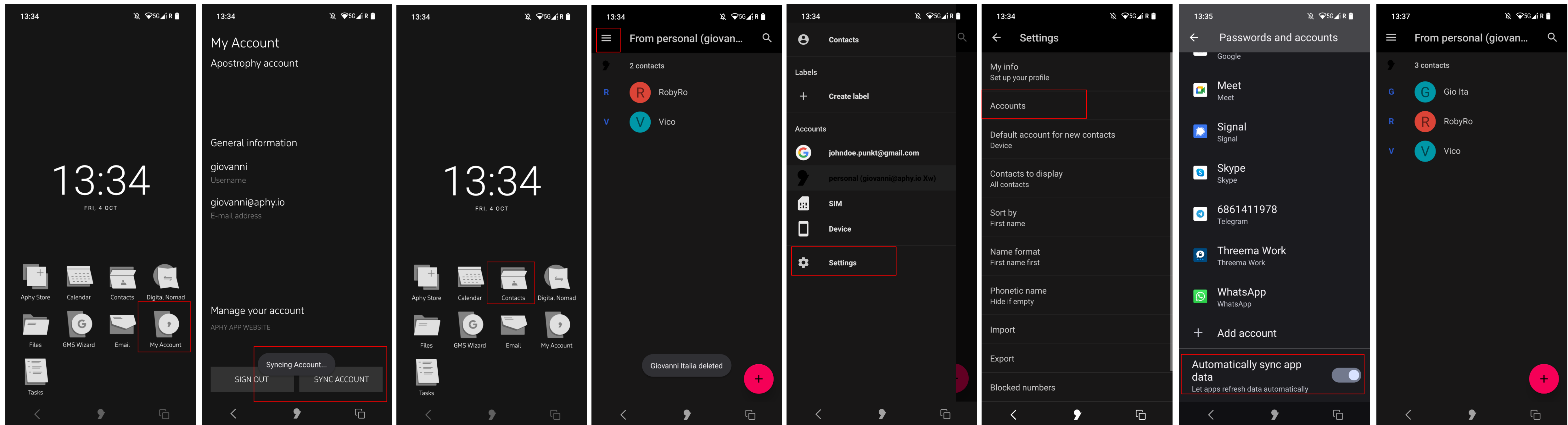


# How to sync contacts with Apostrophy contacts on the MCo2

# How to sync contacts with Apostrophy contacts on the MCo2

1. Ensure you have an internet connection (SIM data or WLAN)
2. Ensure you have completed 'My Account' set up
3. This guide is to sync contacts with your **Personal** contacts from your online Apostrophy account. Refer to [kb.aphy.app/documentation](https://kb.aphy.app/documentation) for more information
4. Tap 'My Account' from the Home screen and then 'SYNC ACCOUNT'
5. Tap 'Contacts' on the Home screen
6. If you have correctly configured 'My Account', your contacts should have been synchronised.
7. Tap the 3 horizontal bars to see the Contacts accounts
8. To Auto-sync your contacts, Tap to turn on, or configure it in **Settings** -> **Accounts**
9. If your contact list is empty it may be that you have not completed step 2 – see the 'How to guides' for configuring 'My Account'



punkt.ch  
info@punkt.ch

Tel +41 91 924 9003  
Fax +41 91 924 9004

Punkt Tronics AG  
Via Losanna 4  
CH-6901 Lugano  
Switzerland

**Punkt.**