

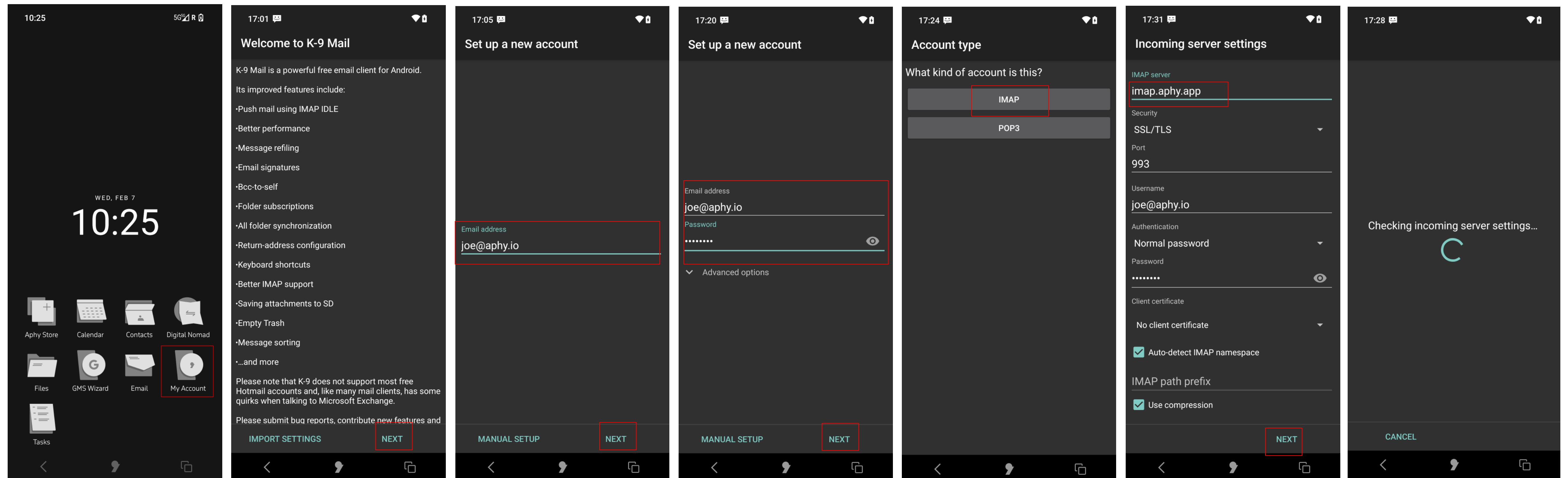
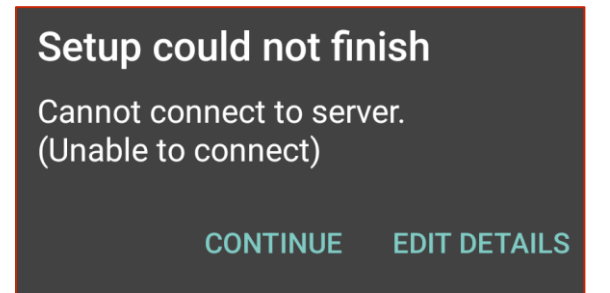
How to configure Email with Apostrophy Webmail with the MCo2

How to configure Email with Apostrophy Webmail with the MCo2

1. Ensure you have an internet connection (SIM data or WLAN).
2. Ensure you have completed My Account set up.
3. Use this guide to configure Email with your online Apostrophy email account (refer to kb.aphy.app/documentation/generic-imap-client-setup-guide and kb.aphy.app/faq/ for further information).
4. Tap Email on the Home screen, then tap NEXT.
5. Enter your aphy.io email address (the one used for My Account set up) then tap NEXT.

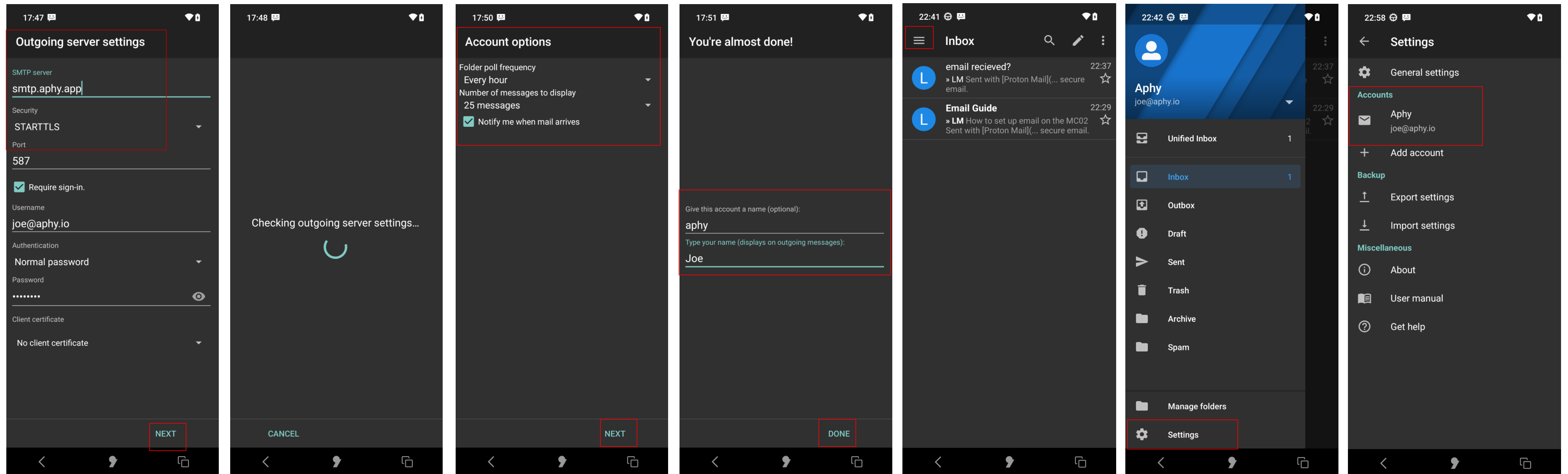
6. Enter your password (the one used for My Account set up) then tap NEXT.
7. Tap to select IMAP.
8. Edit the IMAP server setting to imap.aphy.app then tap NEXT

Note that if you do not change .io to .app the following error message will be displayed.



How to configure Email with Apostrophy Webmail with the MCo2

- Configure the **Outgoing server settings** as follows, then tap **NEXT**.
- Edit the **SMTP server settings** to **smtp.aphy.app**.
- Change the **Security** setting to **STARTTLS**.
- Modify **Account options** as preferred then tap **NEXT**.
- Complete the optional account details then tap **DONE**.
- Enter your **aphy.io** email address (the one used for **My Account** set up) then tap **NEXT**.
- The **Inbox** of your **aphy.io** email account will appear with your emails.
- Tap the 4 horizontal bars to view and manage the folders that you added and configured in your webmail account.
- Note, there isn't currently an option to add folders in K-9 mail. This can be done in your webmail settings.*
- Tap **Settings**.
- Tap your **Aphy** account.



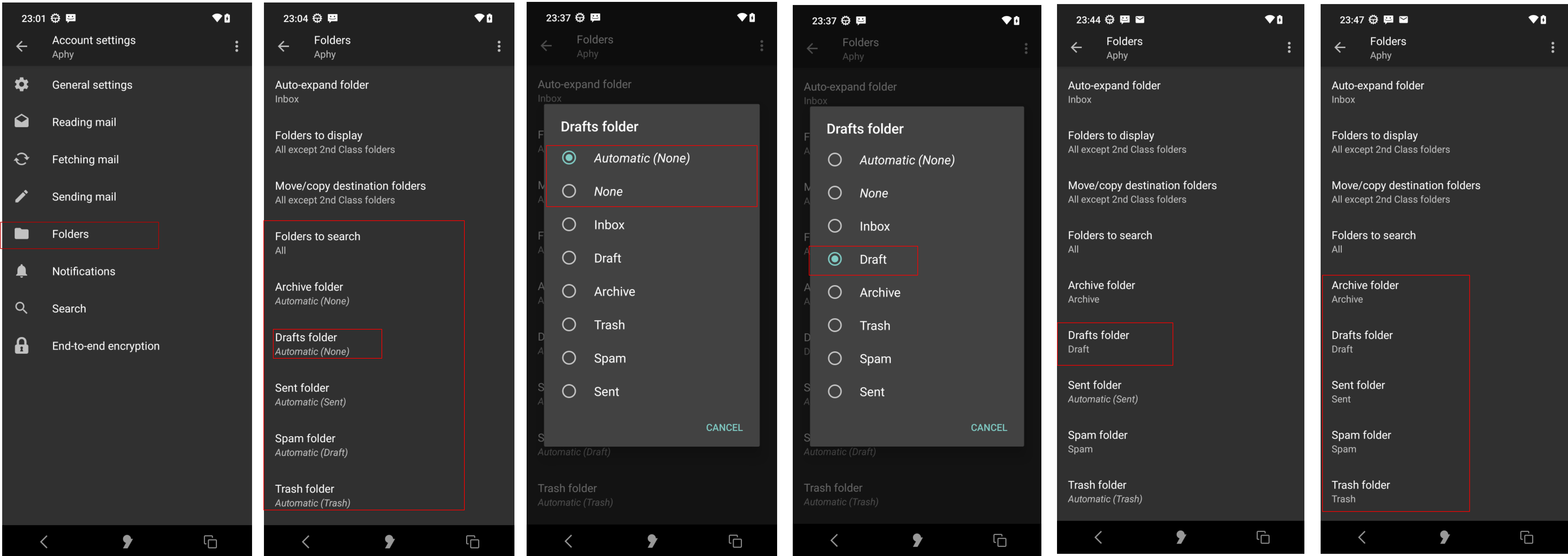
How to configure Email with Apostrophy Webmail with the MCo2

19. Tap Folders.

20. Configure the folders by tapping each one and setup as per your webmail preferences.

21. For example, tap **Draft folder** then change Automatic (None) to **Draft**. This will ensure that your email drafts will be stored in the Drafts folder.

22. Do this for each folder to ensure that your emails are stored as per your webmail designated folders.



How to configure Email with Apostrophy Webmail with the MCo2

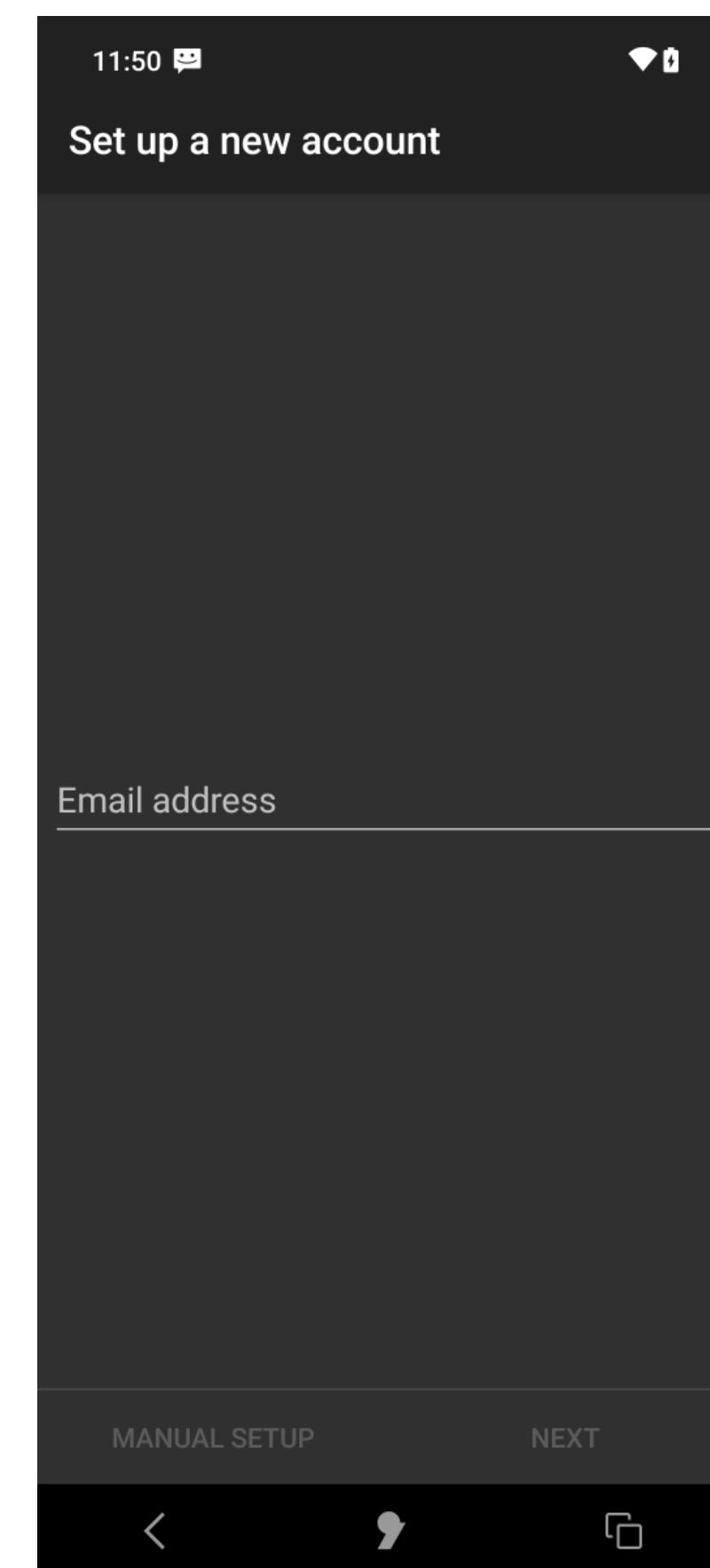
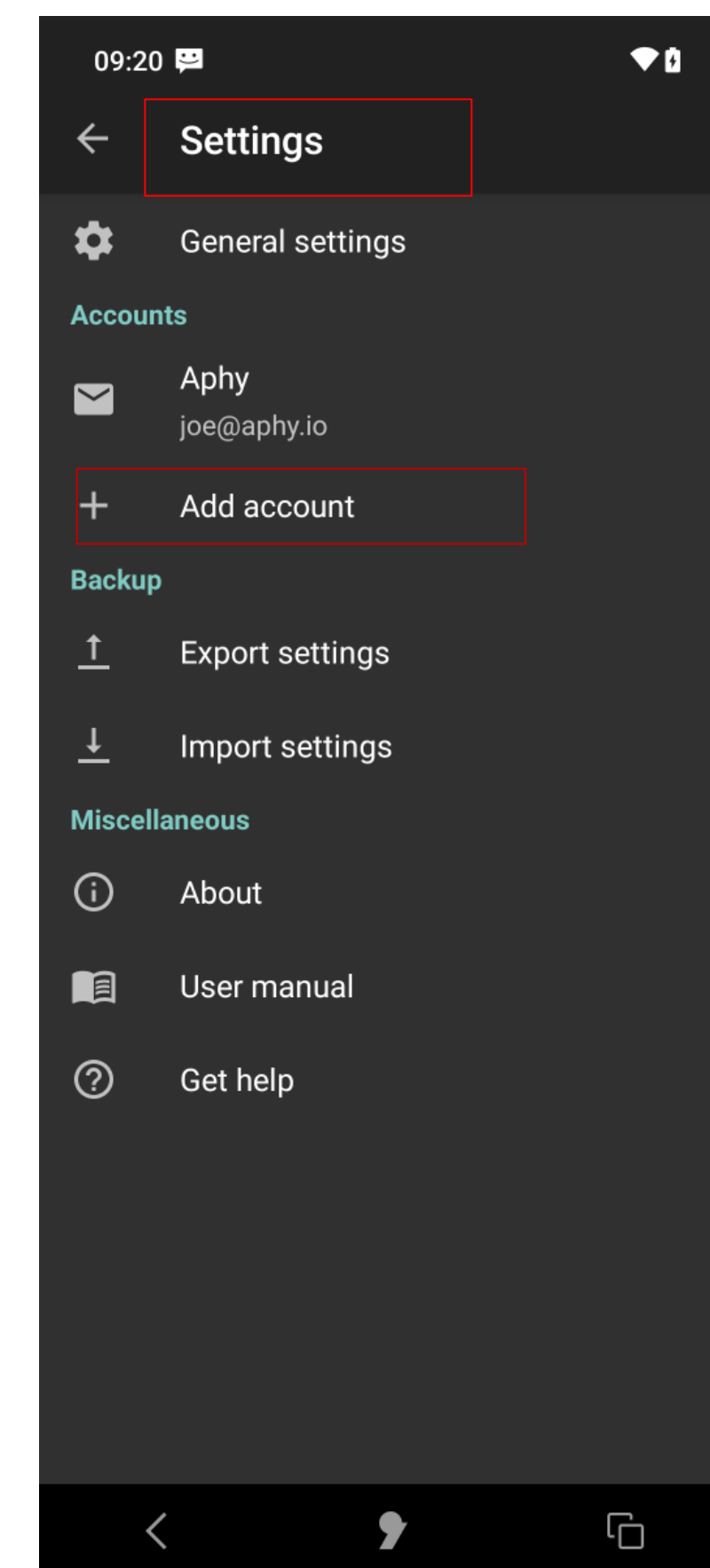
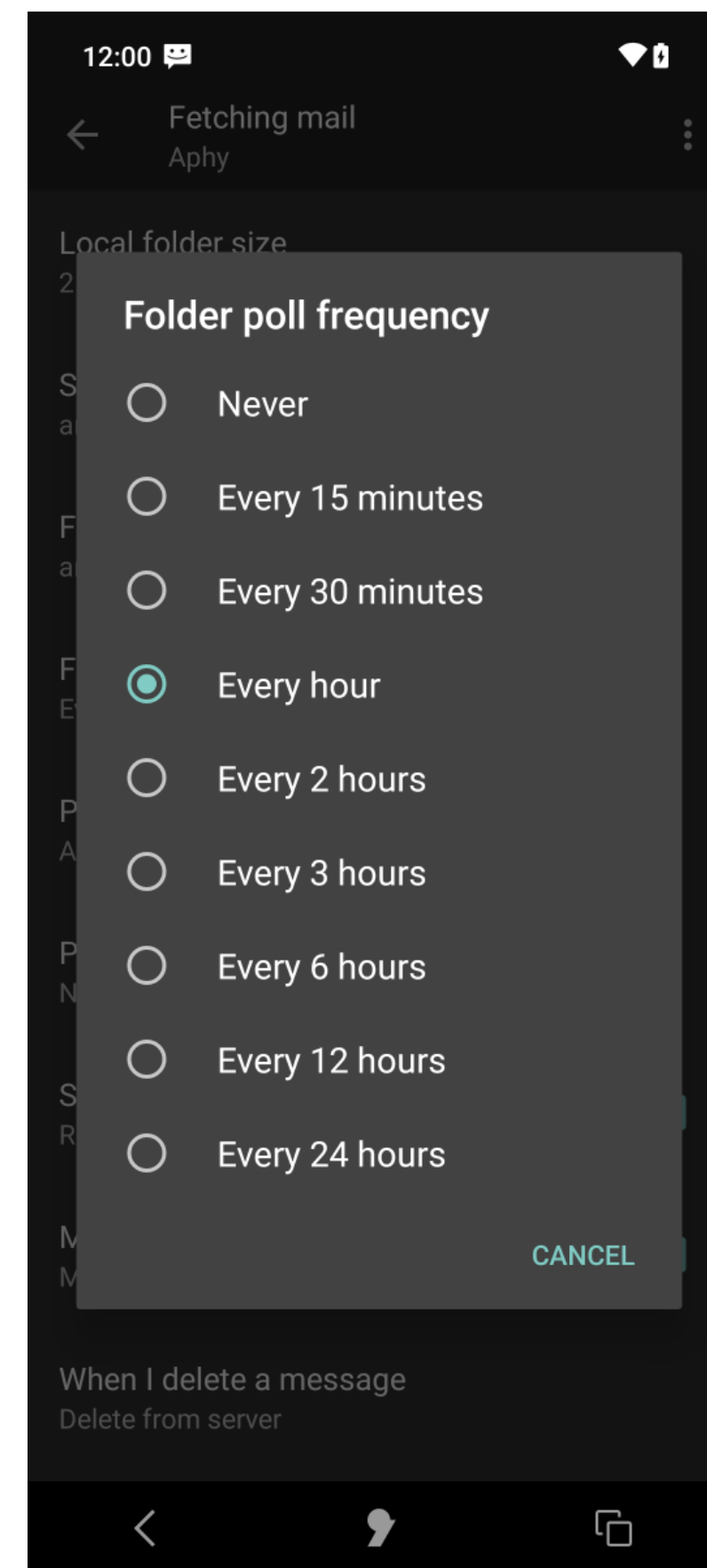
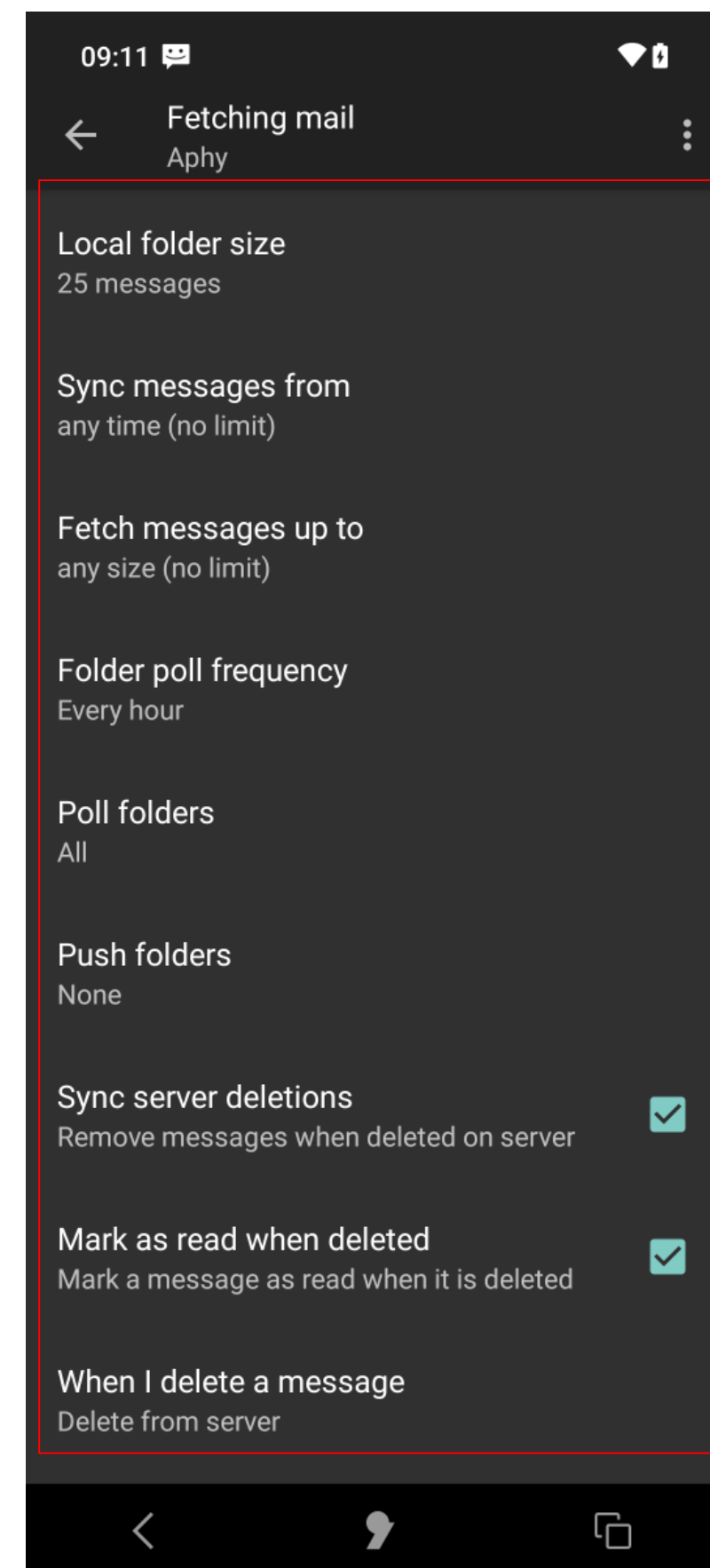
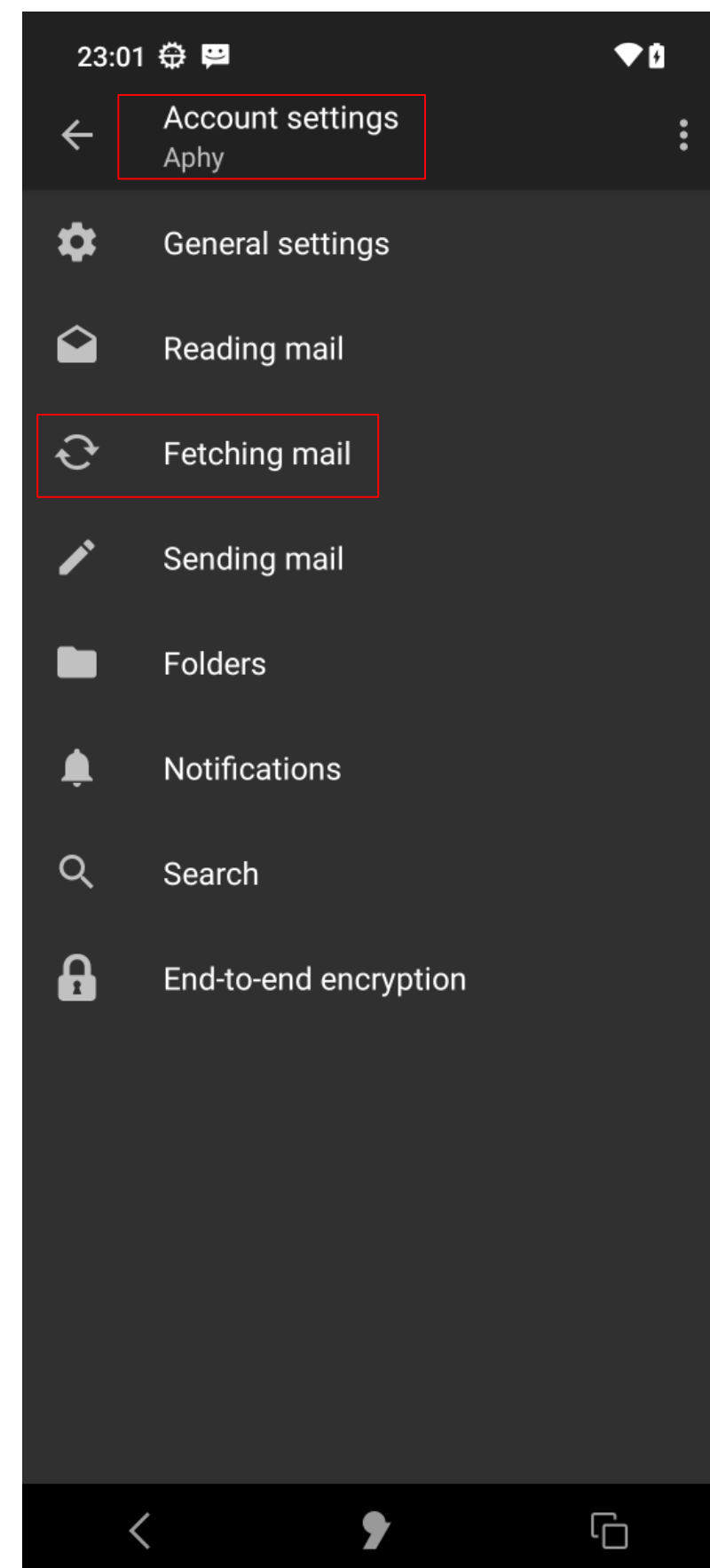
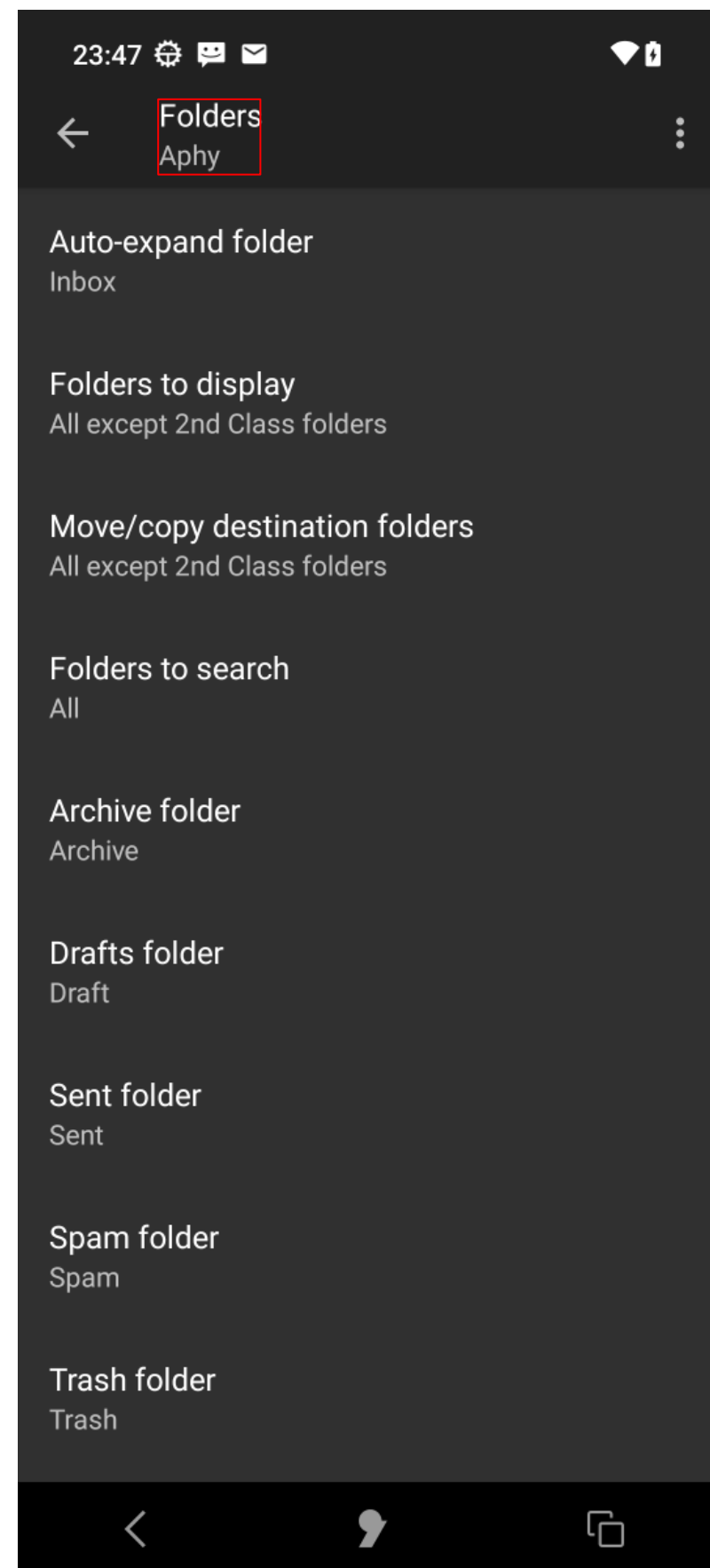
23. Return to Account settings.

24. Proceed to configure your other preferences. For example, tap **Fetching mail**, select the item to configure and modify as preferred. To modify how often the server is checked for new emails, tap **Folder poll frequency** and set as preferred.

25. Continue configuring as preferred.

26. You can add and configure another email account in Settings tap Add account.

27. Follow the same process as before, referring to your other email provider server settings and the information at docs.k9mail.app/en/6.400/accounts/add/.



punkt.ch
info@punkt.ch

Tel +41 91 924 9003
Fax +41 91 924 9004

Punkt Tronics AG
Via Losanna 4
CH-6901 Lugano
Switzerland

Punkt.