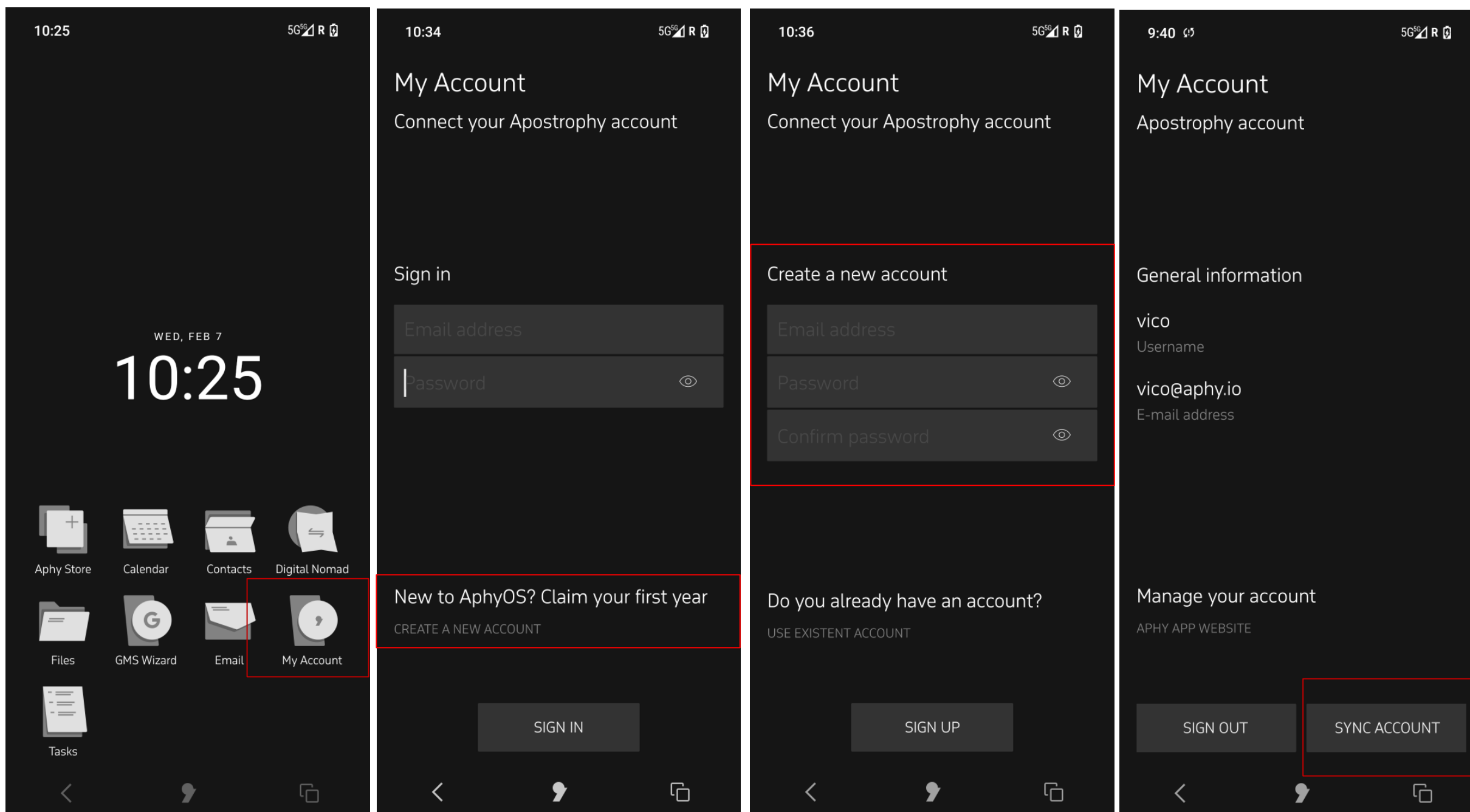


# How to create a new Apostrophy account with the MCo2

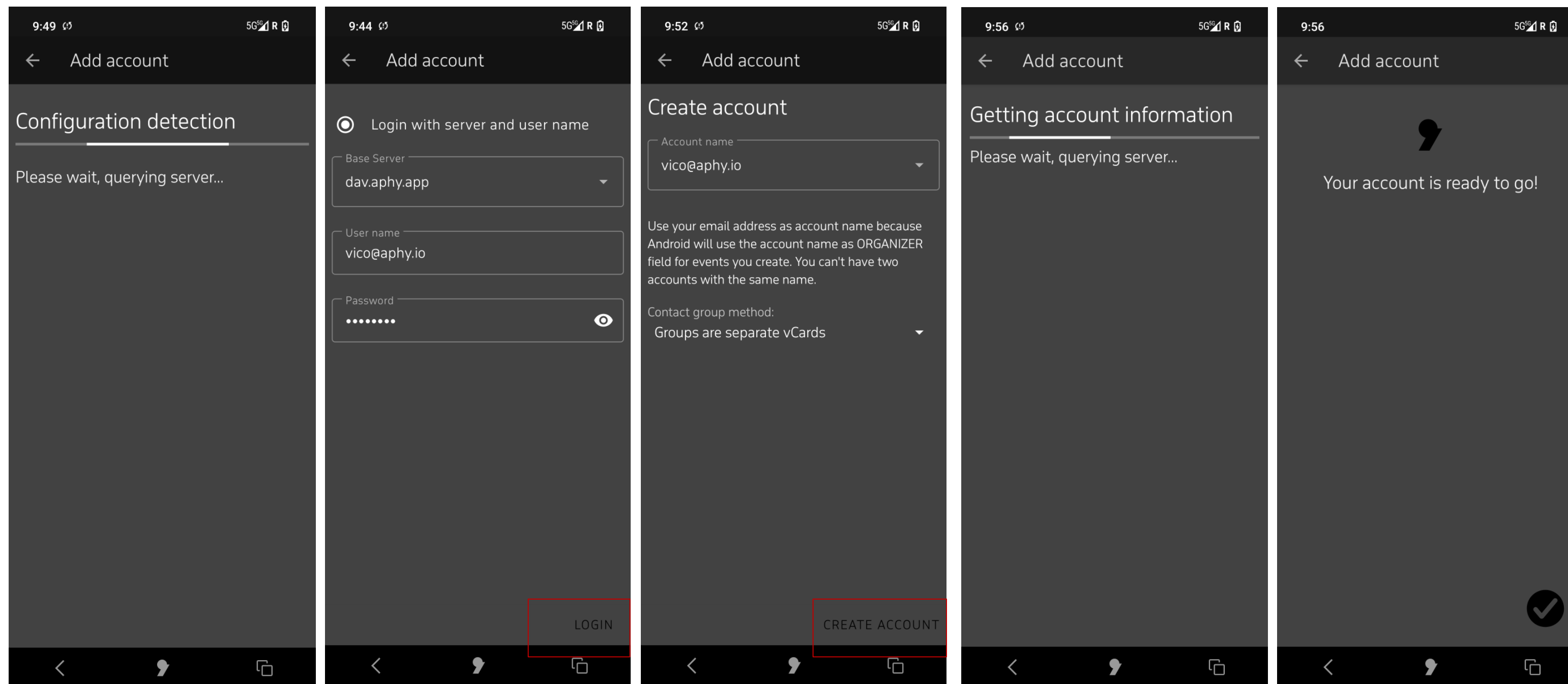
# How to create a new Apostrophy account with the MCo2

1. Ensure you have an internet connection (SIM data or WLAN).
2. You must complete all of the steps in order to sync with Apostrophy Calendar and Contacts.
3. Open 'My Account' app on the home screen if skipped during the first time set up.
4. If you do not have an Apostrophy account Tap 'CREATE NEW ACCOUNT'.
5. Enter desired email address @aphy.io.
6. Enter and confirm password.
7. Tap 'SIGN UP'.
8. Tap 'SYNC ACCOUNT' at the bottom right hand side of screen.
9. Tap 'LOGIN' at the bottom right hand side of screen.
10. Tap 'CREATE ACCOUNT' at the bottom right hand side of screen.
11. Your account is ready to go.



# How to create a new Apostrophy account with the MCo2

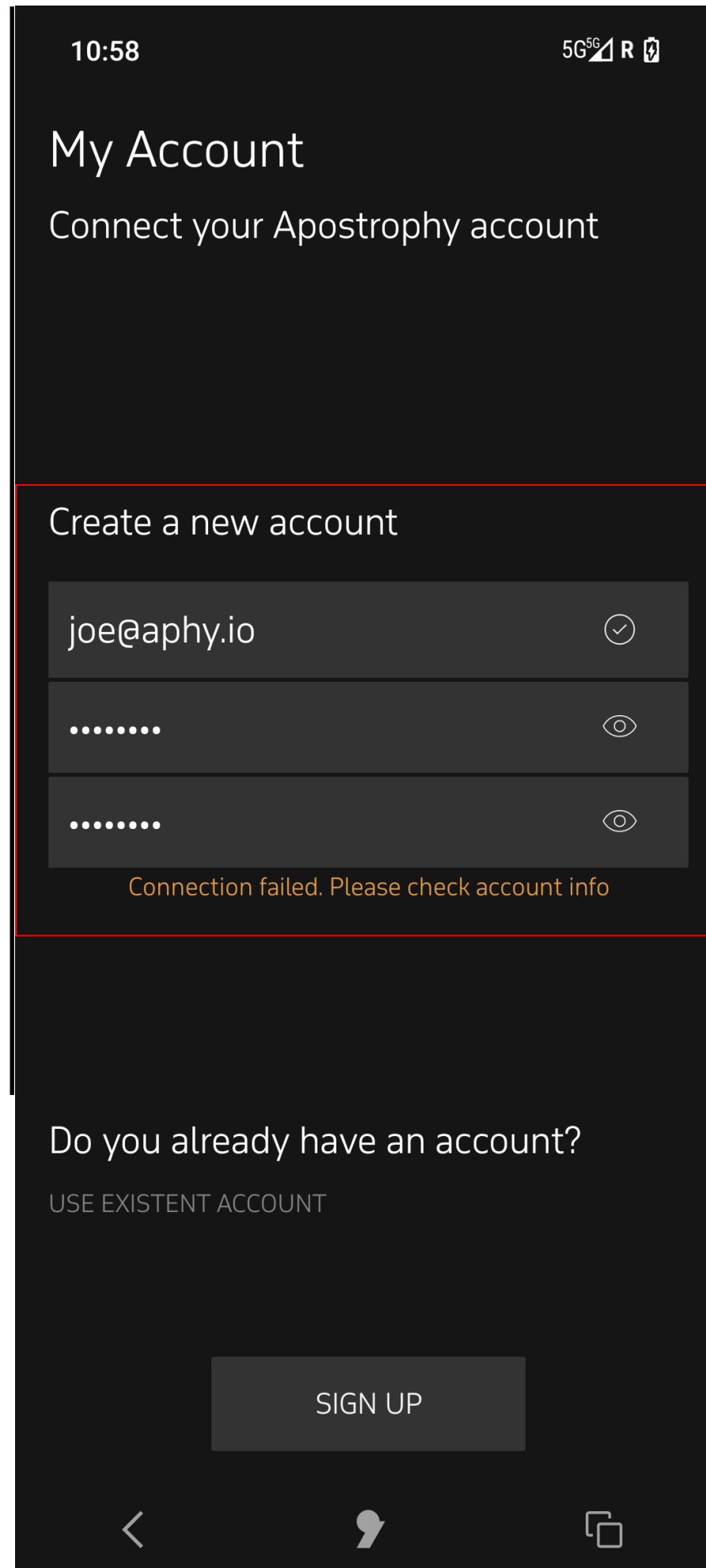
1. Ensure you have an internet connection (SIM data or WLAN).
2. You must complete all of the steps in order to sync with Apostrophy Calendar and Contacts.
3. Open 'My Account' app on the home screen if skipped during the first time set up.
4. If you do not have an Apostrophy account Tap 'CREATE NEW ACCOUNT'.
5. Enter desired email address @aphy.io.
6. Enter and confirm password.
7. Tap 'SIGN UP'.
8. Tap 'SYNC ACCOUNT' at the bottom right hand side of screen.
9. Tap 'LOGIN' at the bottom right hand side of screen.
10. Tap 'CREATE ACCOUNT' at the bottom right hand side of screen.
11. Your account is ready to go.



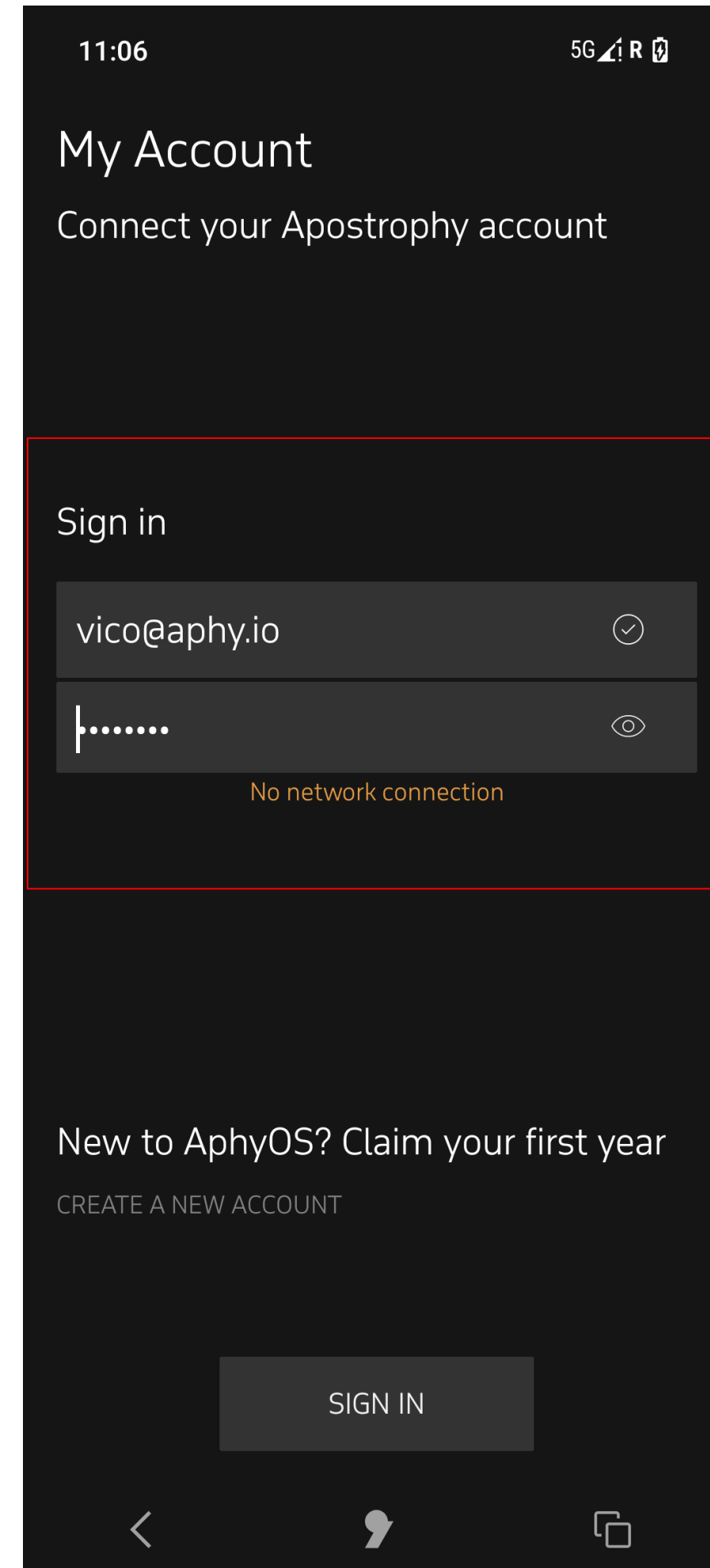
## Error messages

1. When creating account, if the email name chosen is already in use.

“Connection failed. Please check account info”.



2. No internet connection  
“No Network connection”



punkt.ch  
info@punkt.ch

Tel +41 91 924 9003  
Fax +41 91 924 9004

Punkt Tronics AG  
Via Losanna 4  
CH-6901 Lugano  
Switzerland

**Punkt.**